

The *ContactEZ Sub-Gingival Strip System* is designed to safely and conveniently remove hard-to-reach sub-gingival rough margins and overhangs and polish the surface to restore a natural finish. This system is specially designed to access the sub-gingival area to make overhang removal simple while preventing damage to patients' gingival tissue and lips. In addition, these ultra-narrow strips are perfect for cleaning out cement debris in the sub-gingival area of the interproximal space after crown cementation.

- ▶ Ultra-narrow strip for hard-to-reach angles
- ▶ Built-in flexibility
- ▶ Will not cut lips and gums
- ▶ Single-handed, ergonomic design
- ▶ Superior grip and handling
- ▶ Autoclavable and reusable



Cut



Blue Narrow Strip
Sub-Gingival Cutter
Width: 2.5mm • Thickness: 0.07mm
Double-Serrated • No Diamond

REF
33708

Use the Blue Narrow Strip when large, protruding overhangs are detected. Using a gentle buccolingual motion, the thin, serrated strip easily accesses the sub-gingival area and cuts away excess composite material or crown cement.

Trim



Gold Narrow Strip
Sub-Gingival Trimmer
Width: 2.5mm • Thickness: 0.10mm
Single-Sided • Medium Diamond • Central Gateway

REF
33408

Use the Gold Narrow Strip when overhangs are smaller or do not stick out from the tooth. The thicker diamond strip allows you to quickly trim away overhangs and remove cement debris, while the **blank central gateway** enables smooth access to the interproximal space. This strip is also useful for removing biofilm around a cavity prep in the subgingival area for better bonding of the composite filling.

Polish



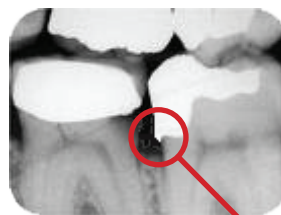
Copper Narrow Strip
Sub-Gingival Polisher
Width: 2.5mm • Thickness: 0.06mm
Single-Sided • Extra-Fine Diamond

REF
33608

Use the Copper Narrow Strip to clean and polish the restoration after removing the overhang. The extra-fine diamond grit restores a healthy and natural finish to the surface of the tooth in one easy step.

For best results:

- ▶ Use minimal vertical pressure on the strips to avoid breakage
- ▶ Autoclave sterilize strips at 286° F (steam heat only, not dry heat)
- ▶ Replace your strips after using with 3-5 patients for optimal efficiency



Overhang remains in the gingival sulcus



Copper Narrow Strip being used in the sub-gingival area